

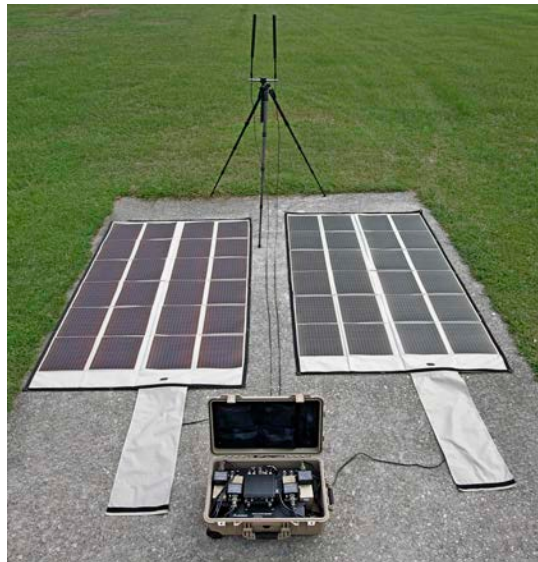
# Mesh Network Repeater/Gateway Box

TSE Inc.'s Mesh Network Repeater/Gateway Box (**MNRGB**) was designed to allow user to extend the range and act as a gateway between channels to cross connect wireless Mesh Networks.

The **MNRGB** is Size, Weight and Power (SWaP) optimized. Designed to be efficient, lightweight and small to meet the demands that other like systems cannot address. The **MNRGB** takes lessons learned with technology improvements to bring our customers the best possible Mesh Network Repeater/Gateway Box solution.

Designed for unattended operation, the **MNRGB** can be recharged from Solar Panels or external AC or DC power sources. The weatherproof solution can withstand heavy rain, snow and sand storms.

Customers can use GFE Mesh Network Radios or we provide them as part of the overall kit as needed.



**Part #: TSE-MN-RG-BOX-S**

(Customer must use GFE Mesh Radio to integrate)

## Features

- Unattended Operation
- Extends Network Range
- Gateway Between Channels
- Recharges from Solar or External AC or DC Power Sources
- Designed with SWaP in mind
- Small Footprint
- Transportable by One Person
- Operates from Rechargeable or Primary Cell Batteries

For more information, contact [sales@tserecon.com](mailto:sales@tserecon.com)

**Tactical Support Equipment**  
4039 Barefoot Road  
Fayetteville, NC 28306  
www.tserecon.com

Phone: 800.889.4030  
Phone: 910.425.3360  
Secure: 910.426.3369  
Fax: 910.425.3361

Specifications subject to change without notice, the information in this document does not form part of any contract or quote.

## Specifications (TSE-MN-RG-BOX-S)

(Can be used with other model Mesh Network Radios, box specifications will vary for other radios)

<b>Frequency Range</b>	30-512 MHz, 1775-1815 MHz, 2200-2250 MHz
<b>Waveforms</b>	TSM, VHF/UHF AM/FM Plain Text (Point-to-Point)
<b>Radio Operation</b>	Supports Two Simultaneous use Channels
<b>Power Output</b>	8-Watts Per Channel
<b>External Power Input</b>	9-36 VDC or 110/220 VAC (Battery Charging and Operating)
<b>Solar Panels</b>	2ea Foldable External Solar Panels (Recharges Internal Batteries)
<b>Internal Power</b>	9-30 VDC (Operation of Internal Radio)
<b>Battery Life</b>	Operations for 3-6 Days Unassisted without External Power (varies with operation modes)
<b>Total Battery Capacity</b>	39.6 Ah / 24 VDC or 79.2 Ah / 12 VDC
<b>Battery Type</b>	Rechargeable BB-2590/U or Non-Rechargeable BA-5590 family of Batteries
<b>Battery Operation</b>	Internal Switch to Select Type of Battery Used for System Operation: Rechargeable or Non-Rechargeable Batteries
<b>Case Type</b>	Weatherproof, Crushproof, Dustproof with Retractable Handle and Wheels
<b>Transportation</b>	Capable of Being Carried by One Person (Includes Case and All Accessories)
<b>Mast/Tripod System</b>	Allows user to Relocate Antennas and can Extend from 12 to 15 ft.
<b>Antennas</b>	High Gain Antennas for Use on Mast/Tripod System
<b>Rear Access Panel</b>	External Connectors with Dust Caps for each Connector and Protective Shipping Cover External Connectors: DC Power Input (6-Pin Amphenol), AC Power Input (3-Pin Amphenol), Solar Power Input (2-Pin Amphenol), L-Band RF (TNC), VHF/UHF RF (TNC), GPS (SMA)
<b>Dimensions</b>	22.00" x 13.81" x 9.00" (55.9 x 35.1 x 22.9 cm)
<b>Case Weight</b>	40 lbs. (with Radio)

For More Information, Contact [sales@tserecon.com](mailto:sales@tserecon.com)

### Tactical Support Equipment

4039 Barefoot Road  
Fayetteville, NC 28306

[www.tserecon.com](http://www.tserecon.com)

Phone: 1.800.889.4030

Phone: 910.425.3360

Fax: 910.425.3361

Specifications subject to change without notice, the information in this document does not form part of any contract or quote.